



**AutismPro
Resource Manager
Release Notes - February 2009**

Contact Us:

AutismPro Customer Service

Direct Phone: 506.462.0991 (country code 00+1)

Toll Free: 1.866.462.0991 (North America only)

Fax: 506.474.8137 (country code 00+1)

Email: support@autismpro.com

Contents

Contents	2
AutismPro Resource Manager Release February 2009	3
AutismPro Resource Manager	4
New Features	4
Open All Activities.....	4
"Add to Student Folder" pop-up	5
Journal Page View Defaults.....	6
Locked Account Feedback.....	7
Password Recovery After Lockout	7
Bug Fixes	8
Printed Journal Entries.....	8
Clearing the Browser Cache	8
Instructions for Clearing the Cache and Deleting Temporary Internet Files.....	8

AutismPro Resource Manager Release February 2009

Virtual Expert Clinics is proud to announce that new features have been added to AutismPro Resource Manager. These enhancements are designed to positively affect all AutismPro Resource Manager users. We recommend every user read the enclosed release notes in order to become familiar with the new features and understand how these features will allow you to use your AutismPro account more effectively.

The AutismPro team strives to meet the needs of its customers and this feature release is largely based on feedback received from our current user community. If you would like to see additional features or have suggestions for enhancements to any of our products, we would appreciate hearing from you. You can contact us by:

- Phone: 506.462.0991 (country code 00 + 1) or 1.866.462.0991 (toll-free in North America)
- Email: support@autismpro.com
- Through the *Contact Us* link on the product sign-in page (<http://www.autismpro.com/about-us/sign-in>)
- Directly through the *Feedback* button within AutismPro Resource Manager

We want to hear from you! Help us ensure that AutismPro's tools meet your needs.

System Requirements for all AutismPro Clients

If you find that your AutismPro account is not operating as described in these release notes, you may need to clear your internet browser's cache and delete your temporary internet files before proceeding to log in to your AutismPro account. This process will ensure that you experience all new features and fixes as intended. For specific instructions, see "Clearing the Browser Cache" at the end of this document.

AutismPro Resource Manager

New Features

You will find several new features in the latest release of AutismPro Resource Manager. These changes are designed to make your experience more productive and enjoyable while minimizing potential difficulties.

Open All Activities

When viewing a student's resources on the ***Classroom*** tab, there is now an option to view or print all activities for a given objective. To open all activities for an objective:

1. Click the *Classroom* tab at the top of the screen
2. Click the tab with the name of the student whose resources you wish to see
3. Below the student's name, click the *Curriculum* tab
4. Click the tab with the name of the developmental area you wish to browse activities for (e.g., Communication, Expressive Language)
5. Select a goal from the drop-down list to see assigned objectives (only goals for which you have assigned objectives will appear on the list)
6. Click the *Show Activities* button beside the objective you want to see activities for
7. Click the *Open All* button at the bottom of the list of activities

All the activities for the chosen objective will open in a new window.

8. Click the *Print* button in the top-left corner of the new window to print all of the activities for this objective
9. Click the *Close* button in the top-right corner of the window to return to the ***Classroom*** tab

"Open All" Activities



Hosea
Mrs. Wilson's Class
Armour Heights ES

Classroom Teacher Leah Wilson

Curriculum Strategies Status Report Journal


Communication Expressive Language

Goals for this developmental area:
 Improve the child's skills in the area of Conversation Skills

Objectives for this Goal: Hide completed

Hide Activities... | Responds to greetings Status Not Addressed

	Curriculum Level	Method	Status	Active
Respond to a Familiar Adult's Greeting	Basic	Behavioral	Not Addressed	<input checked="" type="checkbox"/>
Respond to a Peer's Greeting	Basic	Behavioral	Not Addressed	<input checked="" type="checkbox"/>
Respond to Greetings during a Preferred Activity	Basic	Behavioral	Not Addressed	<input checked="" type="checkbox"/>
Respond to Greetings during a Non-preferred Activity	Basic	Behavioral	Not Addressed	<input checked="" type="checkbox"/>
Knock, Knock	Basic	Developmental	Not Addressed	<input checked="" type="checkbox"/>
Swing	Basic	Developmental	Not Addressed	<input checked="" type="checkbox"/>

 Open All show inactive

"Add to Student Folder" pop-up

When adding a resource (e.g., an objective or strategy) to a student's folder, a pop-up appears that prompts the user to choose a class and student from a list. In previous versions, this list would include all students in the class, including those who already had the chosen resource in their folders. With this new release, only students who do not already have the chosen resource will be displayed in the list.

"Add to Student Folder" pop-up

Add Objective to Student Folder

Objective Assigns pretend roles to toy animals and dolls

Student

School Armour Heights ES

Class Mrs. Wilson's Class

Student* Hosea

Include activities for these methods:

Behavioral

Developmental


*Note: Only students without this objective already in their folder are shown.

Add Close

Journal Page View Defaults

When viewing the student's *Journal*, the new default view is to show entries from the past month. In previous versions, the default view only showed entries from the past week.

Journal Page Defaults




Classroom Resources My Account



Armour Heights ES: Mrs. Wilson's Class (change)

Hosea Melissa



Hosea Classroom Teacher Leah Wilson
Mrs. Wilson's Class
Armour Heights ES

Curriculum Strategies Status Report Journal

Journal  New Entry

1/27/2009 Leah Wilson (lwilson@ahes.edu)  Edit  Delete


Need to work on playing with peers and expanding his play interests. Only seems interested in very few activities during free play time. Frequently isolates himself.

1/14/2009 Leah Wilson (lwilson@ahes.edu)  Edit  Delete


Excellent response to vocabulary activities.


The entries displayed on the journal page can be customized by choosing dates from the *Filter* panel on the right side of the screen.


Filter Panel




Filter

Starting Date 12/27/2008 

Ending Date 1/27/2009 

 Retrieve Entries

 Print Entries

Locked Account Feedback

If a user makes 10 unsuccessful attempts within 10 minutes to log in to their AutismPro account, the account will automatically lock for 30 minutes. This is a feature designed to prevent unauthorized access to user information. During this lockout period, the account cannot be accessed and a new password cannot be requested.

In previous versions of AutismPro, an attempted login (even with a correct password) during the lockout period would not provide specific feedback stating the reason for the failed login. A user could be locked out of their account without knowing it. A new message will now be displayed to inform the user about the status of their account.

Locked Account Feedback

User Name	<input type="text" value="lwilson@ahes.edu"/>
Password	<input type="password" value="••••••"/>

Your account has been automatically locked due to multiple consecutive login failures and will be automatically unlocked in 30 minutes.

[forgot password...](#)

Password Recovery After Lockout

If a user is locked out of their account due to having too many failed logins, they must wait for the 30 minute lockout period to end before they can request a new password. This is a feature designed to prevent unauthorized access to user information.

In previous versions of AutismPro, the password recovery option would not be made available after a lockout period until the user had made another unsuccessful login attempt.

Password Recovery Attempt During Lockout

Forgot your password?

To reset your password, please enter your user name and click the Reset Password button. Your new password will then be emailed to you.

User Name

This account is locked and the password for a locked account cannot be reset. Locked accounts are automatically unlocked after 30 minutes.

Bug Fixes

Printed Journal Entries

In previous versions of AutismPro Resource Manager, journal entries would be "compressed" when printed out, removing any white space where there were multiple consecutive spaces or linebreaks. With this new release, printed journal entries will preserve the formatting of the original entry and print as they appear on the screen.

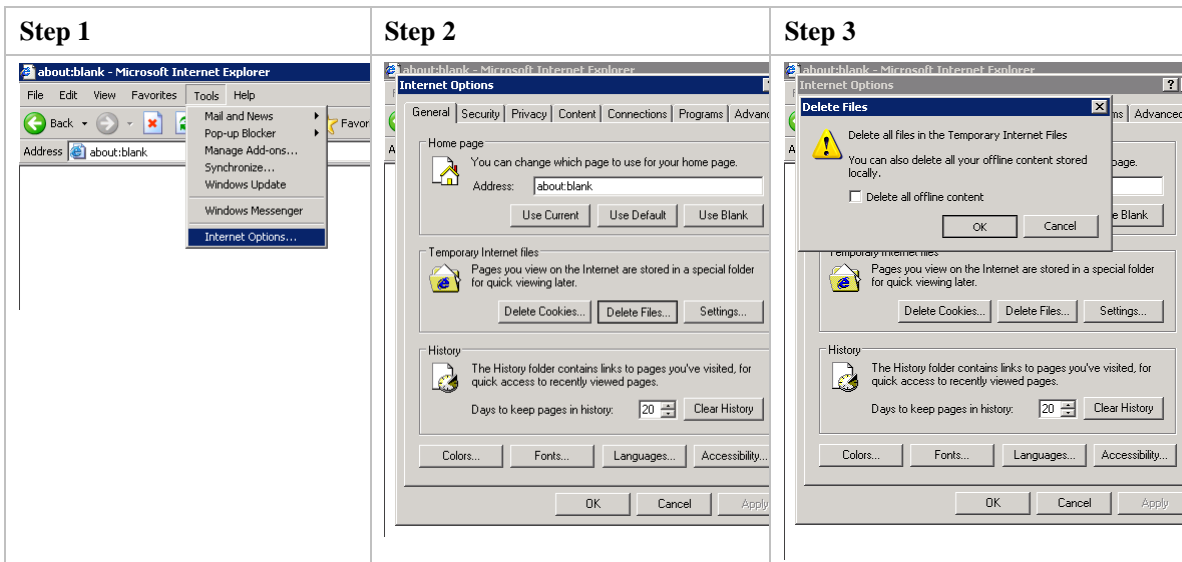
Clearing the Browser Cache

If you find that your AutismPro account is not operating as described in these release notes, you may need to clear your internet browser's cache and delete your temporary internet files before proceeding to log in to your AutismPro account.

Instructions for Clearing the Cache and Deleting Temporary Internet Files

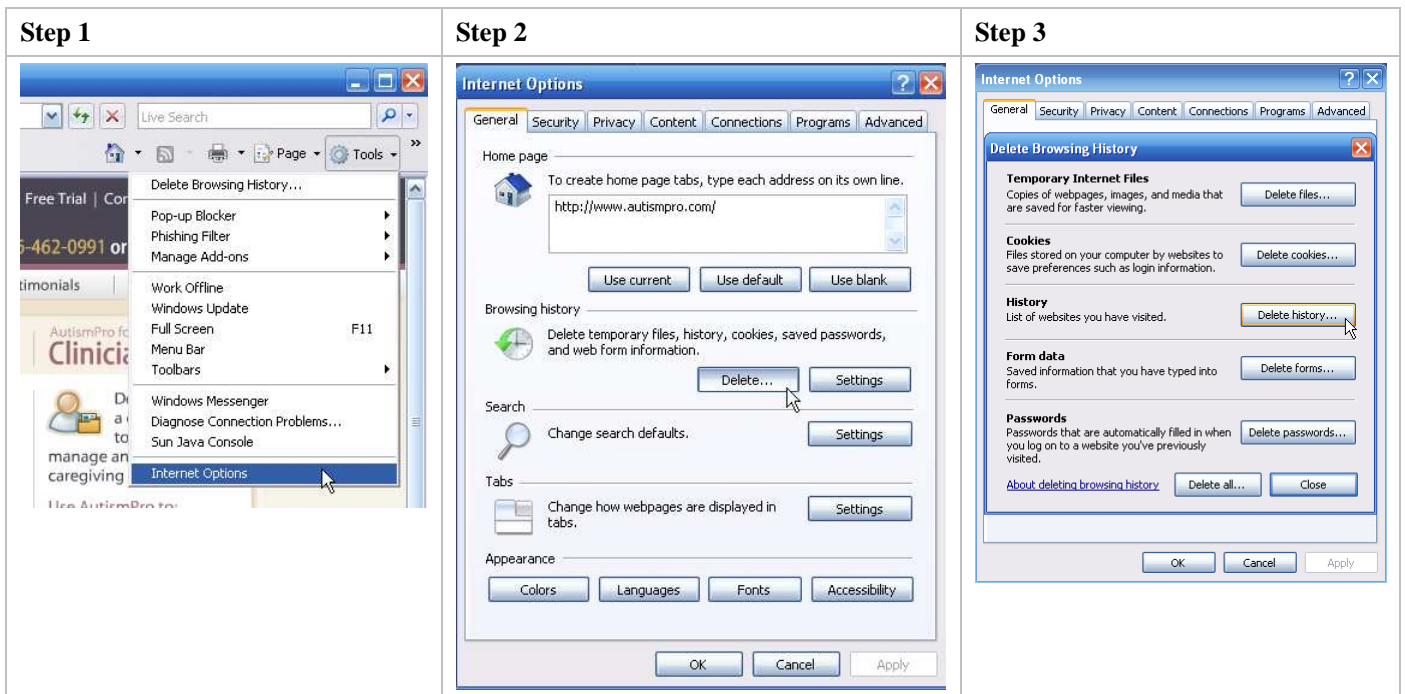
IE 6

1. From the *Tools* menu option, click *Internet Options*.
2. From the *General* tab:
 - a. Under *Temporary Internet files*, click *Delete Files*, and in the "Delete Files" dialog, click *OK*.
3. Click *OK* and click *Apply*.



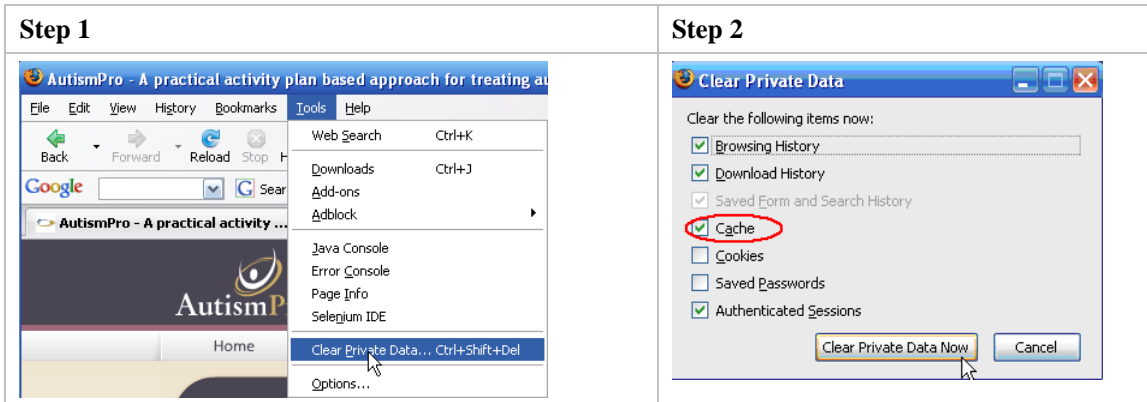
IE 7

1. From the *Tools* menu option, click *Internet Options*.
2. From the *General* tab, under the heading *Browsing History*, click *Delete*. The *Delete Browsing History* window will appear.
 - a. Under the heading *Temporary Internet Files*, click *Delete Files*. In the *Delete Files* dialogue box, click *Yes*.
3. At the bottom of the *Delete Browsing History* window, click *Close* and then click *OK*.



Firefox 2+

1. From the *Tools* menu option, click *Clear Private Data*.
 - a. Select: *Cache*.
2. Click *Clear Private Data Now*.



Safari 2+

1. From the *Safari* menu option, click *Empty Cache*.
2. In the dialogue box, click *Empty*.

